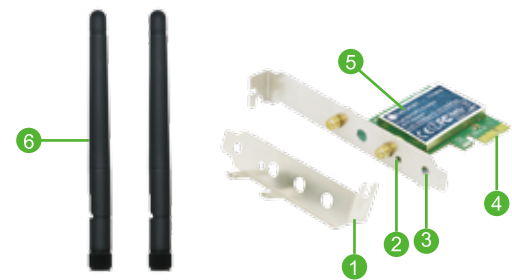




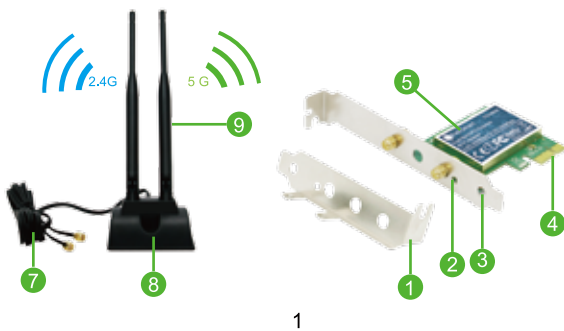
# Wireless N 600Mbps Dual Band PCI Express Wi-Fi Adapter

Model : •FS-N600 •FS-N600-Pro

**Basic Edition:** FS-N600 Wireless N 600Mbps Dual Band Wi-Fi Adapter with Antenna



**Pro Edition:** FS-N600 Wireless N 600Mbps Dual Band Wi-Fi Adapter with High Power Antenna



- 1 Low profile bracket
- 2 Activity Indicator
- 3 Standard profile bracket
- 4 PCI express interface
- 5 Heat sink
- 6 2X3 dBi Wi-Fi Antenna
- 7 Extension cable(2meters)
- 8 Magnetic mounting base
- 9 2X6dBi high gain antenna

### Product Description :

Feb Smart Wireless Dual Band N600(2.4GHz 300Mbps or 5GHz 300Mbps) PCI Express (PCIe1X) Wi-Fi Adapter Network Card Special Designed for Online Gaming and HD Video Streaming.

### Product Features :

1. Qualcomm Atheros Chipset inside for high performance Wi-Fi Connection.
2. Super fast wireless N network at 5G 300 Mbps or 2.4G 300 Mbps.
3. Seamlessly compatible with 802.11a/b/g/n products
4. Supports 64/128 WEP, WPA/WPA2, WPA-PSK/ WPA2-PSK(TKIP/AES)
5. Upgrades a standard or low profile bracket for all desktop PC.

6. External Wi-Fi antenna for better wireless connection and coverage.
7. Detachable antenna design for more powerful antenna replacement.
8. Compatible with IEEE 802.1X, 4X, 8X, 16X PCI express slot.

### Basic Edition Package :

- 1X FS-N600
- 2X Wi-Fi Antenna
- 1XUser Manual
- 1xMini CD
- 1XLow Profile Bracket

### Pro Edition Package :

- 1X FS-N600
- 1X High Power Antenna Kit
- 1XUser Manual
- 1xMini CD
- 1XLow Profile Bracket

### System & Hardware Requirements:

Windows 10(32/64bits), Windows 8.1(32/64bits), Windows8 (32/64bits),No need driver.

Windows7 XP(32/64bits), Need to install the driver by the mini CD in the package.

Get the newest driver please visit [https:// www.febsmart.com](https://www.febsmart.com) Or send email to us at [support@febsmart.com](mailto:support@febsmart.com).

### Analytical Note :

1. Can find"Qualcomm Atheros ARXXXXXX Wireless Network Adapter"means Works Correctly no need to install driver anymore. Can connect to internet directly as you wish.(Windows 10,Windows8.1,Windows8(32/64bit)
- 2.Can't find "Qualcomm Atheros ARXXXXX Wireless Network Adapter" or PC can find it in a yellow triangle. Or PC can find a "Ethernet Controller"( Unknown Device) under Other Device in Device Manager. Means users have assembled this card on users PCs correctly.And PC have found it,but lack driver on users PCs. Please install drivers in Mini CD. (Windows 7,Server,XP)
3. Can't find"Qualcomm Atheros ARXXXXXX Wireless Network Adapter", can't find" Ethernet Controller (unknown device)"under Other Device in Device Manager. Means you were not put the Wi-Fi card to PCI Express Slot correctly. Need to re-plug Wi-Fi adapter or change it to another PCI Express slot and check again.

### FS-N600 Software Installation:

**Note :** Most of Windows 10, 8.1,8 systems do not need any driver if equipped with Windows original system. If system is unable to read Wi-Fi adapter, please refer to the driver installation steps as below.

The software for each system are using same operating panel, but build on different driver files.

### Preparation :

1. If computer have CD RAM,please go to open the Atheros file folder directly.
2. If computer can't read CD please visit [www.febsmart.com](http://www.febsmart.com) and download software pack. Can email us as well at [support@febsmart.com](mailto:support@febsmart.com) .

### Install the Software on Windows10, 8.1, 8, 7, XP (32/64bit) :

**Note :** This driver installation steps works for Windows10, 8.1, 8, 7(32/64bit) systems.

**Steps1.**Follow steps and find correct software version on mini CD or Downloaded software pack:



**Steps2.** Double right-click the software and running the software.

1. Double right-click



2. Select language



3. Waiting for preparation files ready.



- 4.Click "Next"

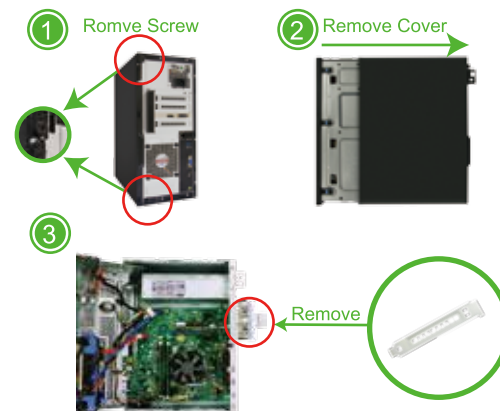


- 5.Accept the license.

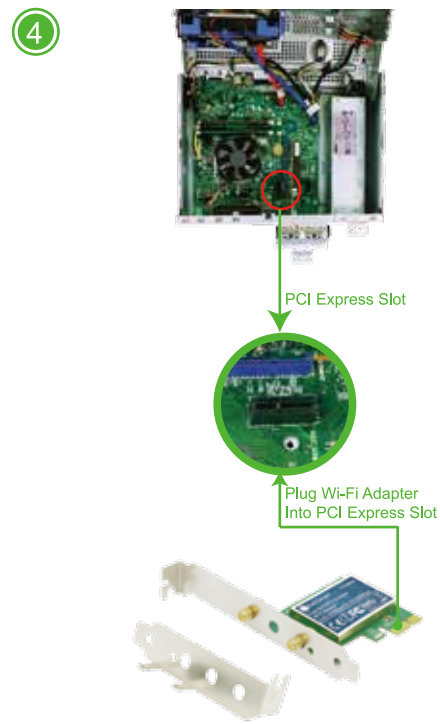


### Assemble Wi-Fi Adapter to Desktop Computers :

**Step1.** Switch OFF, unplug your computer from the main socket, unplug the power cord and other connected peripheral devices. Remove the cover from computer's case.



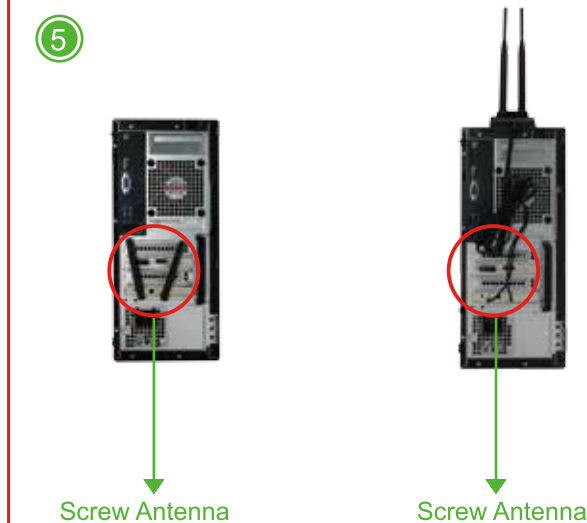
**Step2.** Find the correct PCI Express Slot ,Insert the wireless network card into an empty PCI-E slot of the motherboard.



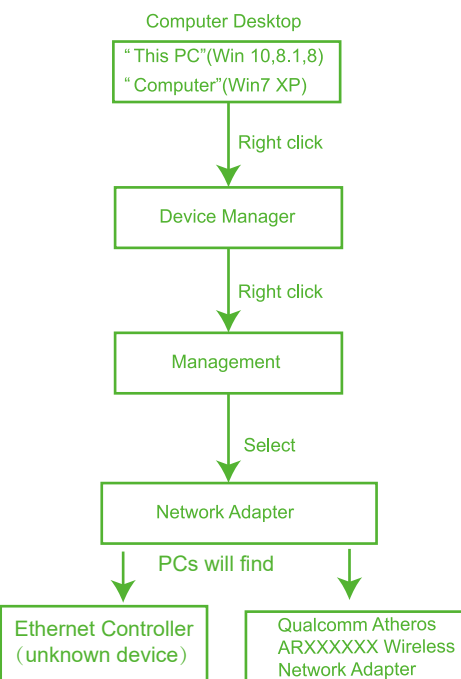
**Step3.**Screw in the antennas included directly to wireless network card. Note: If needed Position of the antennas can be adjusted to improve wireless reception. Reattach the cover of computer case, turn on computer.

### Basic Edition :

### Pro Edition :



### Find the Wi-Fi adapter on computers, check if the Wi-Fi adapter assembled properly:



- 6.Waiting for program installation

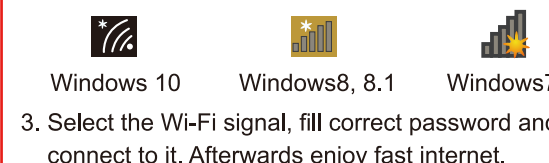


- 7.Click "Finish", and using the new wireless network card.

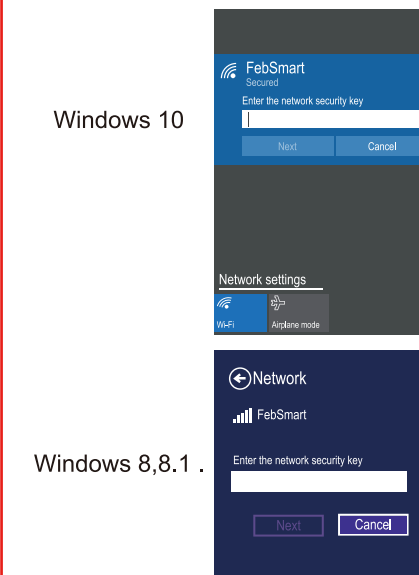


### Step3. Connect to internet:

- 1.Locate the task bar in the bottom right corner of your desktop.
- 2.Select the Wireless icon as below on each system.



3. Select the Wi-Fi signal, fill correct password and connect to it. Afterwards enjoy fast internet.



### Windows 7



### Trouble Shooting and Solution:

1. Why this card can't connect to 5G or PCs can't find 5G signal on my PC?
 

PCs find 5GHz signal but can't connect: 1.Connect to 2.4G first, make sure it is connected. 2. Find your 5G signal and connect, most of them will work. PCs cannot find my 5G signal but 2.4G works: 1.Connect 2.4G signal first. 2. Restart PC or re-plug this Wireless card. Or in Device Manager-Remove this card and install driver again for it. Then PCs will find 5GHz and will allow PCs connect.
2. Why my PCs always get poor signal or drops sometimes?
 

A. Test Wi-Fi signal in PC area(same spot, same height) by cell phone check if PC was placed in a Wi-Fi dead zone if yes, please change location for PCs.  
B. If the distance little long PCs will get poor signal or only 2.4G signal. To improve this please considers change the PCs or Wireless AP's location. Or you can buy a more power Wi-Fi Antenna for it.
3. Why my PC find 2.4G signal only?
 

PCs was placed too far away from Router.5GH band will support more data speed by covers a small area. Wireless AP or Router's signal may cannot reach PCs location. Considers decrease the distance between Router and PC.
4. I am a Linux user how can I get source code to compile my PC?
 

Go to open the mini CD in the package find ATH9K links get source code online. Or go to our site download ATH9K driver.
5. Windows10,8.1,8 system cannot load this card automatically how to fix this?
 

Just need to install the drivers in mini CD, device will works properly. If do not have CD ROM, please go to our site download drivers for the models in your hand.
6. My PCs find few signals only, not as expected performance, how to fix this?
 

Please remove Wi-Fi card from PCs and install it again. At the same time please screw Wi-Fi antenna and make sure it is screwed correctly. Most of time it is Wi-Fi antenna wasn't screwed properly.
7. There a PCIE X16 port only,is it working on this?
 

Absolutely YES,Works on PCIE X1, X4, X8, X16 slot
- 8.Where I can find support from Feb Smart?
 

Get prompt tech-support:[www.febsmart.com](http://www.febsmart.com) or [support@febsmart.com](mailto:support@febsmart.com)